



LAND RP OVERVIEW – 2016
Lorne Annual Meeting, 20-24 November 2016

Land Process/Feedback

LAND RP

Model Development
& Evaluation (CABLE)

Meaning of Potential Evapotranspiration
New Pan Evaporation Model
Impact of Earlier Spring Vegetation Greening
Land Clearing (Amazon)
Vegetation and Water Resources (Australia)
Vegetation and Water Resources (Tropics)

LSM during different types
of drought
LSM in Savanna's (TERN)
Temperature Extremes (NSW)
PALS Benchmarking

TERN

CACWR/CSIRO CMAR

ETH-Zurich

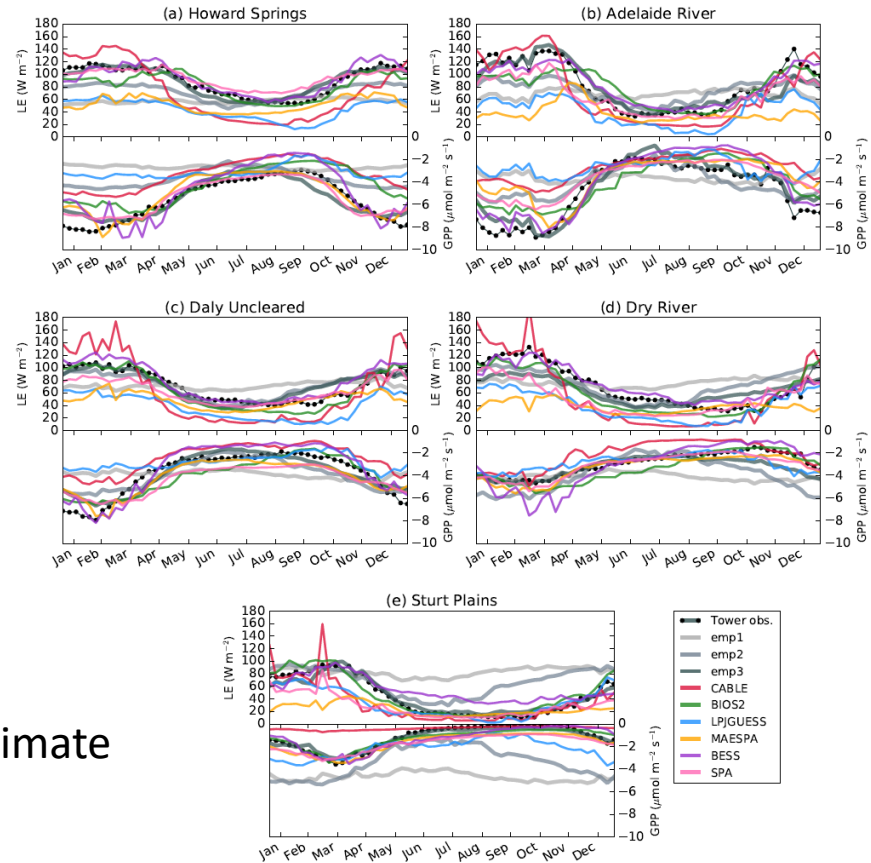
CSIRO Land and Water

TERN based collaboration

Q. How well do LSMs simulate Latent heat flux and GPP in savanna's

A. Not very well.....

Improve.
Need to make vegetation adaptive to climate



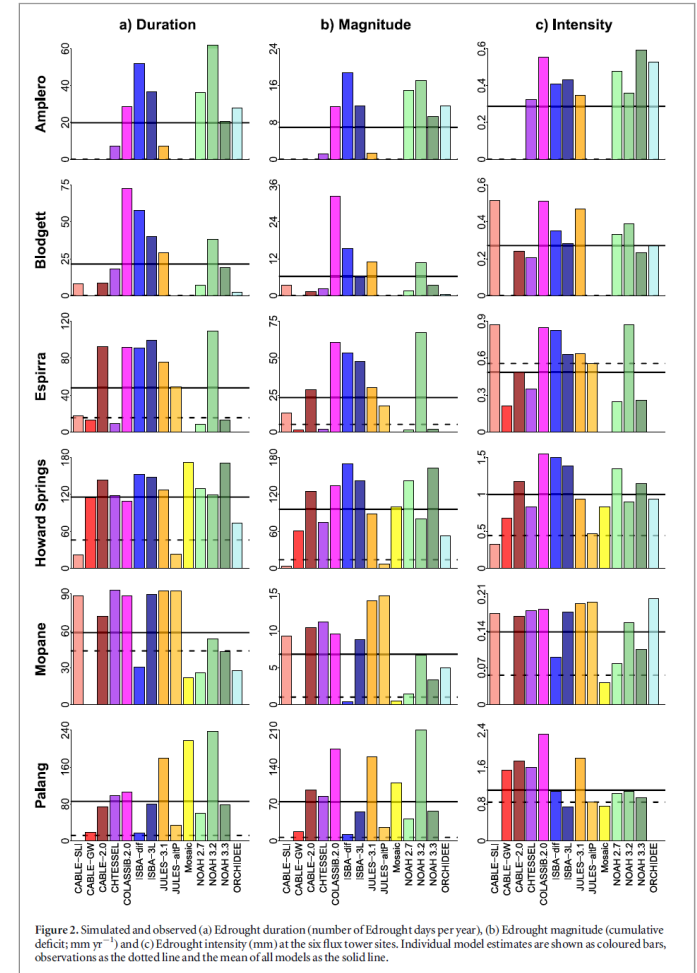
ARCCSS initiated collaboration

Q.
**How well do LSMs simulate
 seasonal cycle/seasonal drought?**

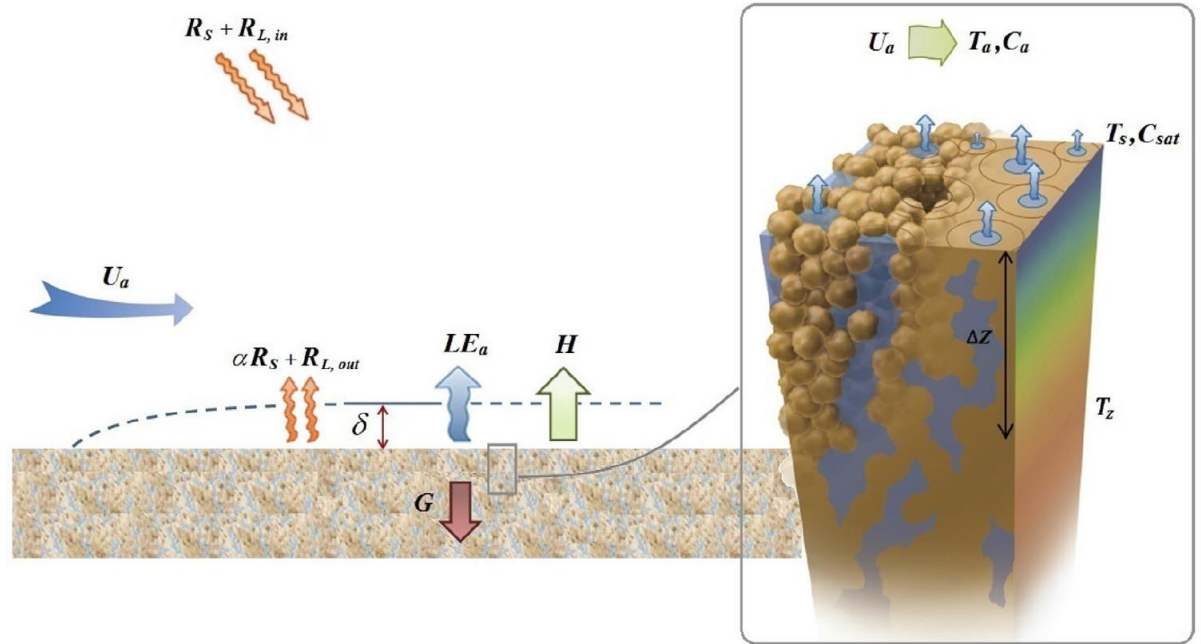
A.
Not very well...

Improve?

Good question ...



ETH-Zurich
Collaboration



CURRENT PROCEDURE:

- (i) measure radiation, temperature, humidity, wind
- (ii) Assume water is freely available for evaporation and calculate “Potential Evapotranspiration”

PROBLEM:

- (iii) If water were freely available, then radiation, temperature, humidity, wind might be different

